

# I-SERIES CONVERTIBLE<sup>®</sup>

**BARTON**  
CHAIR SOLUTIONS

*"Your Safest Move."*<sup>™</sup>



## I-SERIES CONVERTIBLE<sup>®</sup> CHAIRS

Moving and positioning a dependent patient can be challenging. Performing these tasks on the average-size person can be difficult and unsafe for both patient and caregiver. With heavier patients, the task can be an even greater challenge.

That's why Barton Medical Corporation developed the Convertible<sup>®</sup> I-Series. Now patients can enjoy the freedom of mobility and the comfort of easily-adjusted positioning, all under safe conditions. The Convertible<sup>®</sup> I-Series chairs are available to accommodate up to 1000 pounds.



**1- 877- BARTON**

*"Your Safest Move."*<sup>™</sup>

**BARTON<sup>™</sup>**  
MEDICAL CORPORATION

[WWW.BARTONMEDICAL.COM](http://WWW.BARTONMEDICAL.COM)

# I-SERIES CONVERTIBLE®

**BARTON**  
CHAIR SOLUTIONS

*"Your Safest Move."™*

## CONVERTIBLE® I-SERIES

The **Barton® Convertible® I-Series** chair and the **Positioning and Transfer System (PTS™)** are designed to allow a single caregiver the ability to transfer and frequently reposition the dependent patient safely and easily. The **I-400, I-700, and I-1000** chairs perform the functions of stretcher, mobile chair, and custom seating. Lateral transfers are made easy with the PTS™ while the chair is in the stretcher position. Patient positioning is accomplished by combining the infinite reclining positions with the different tilt positions. Being able to frequently reposition the patient significantly reduces the chance of pressure ulcers and greatly increases the patient's tolerance for long-term seating. The adjustable headrest and armrests can even be used to apply lateral stability to the leaning patient. With all of these standard features, the **Barton® Convertible® I-Series** chairs give the staff the ability to get patients out of bed with greater frequency and ease and without the indignity, discomfort and medical limitations of traditional handling methods.

- The I-Series utilizes the same unique, patented transfer-system that has made The Barton® Positioning and Transfer System (PTS™) revolutionary to the health-care market. The I-Series is designed to be used in hospitals, nursing homes and assisted living centers.
- The I-Series is constructed with a sturdy yet light-weight frame, allowing for easy mobility of the patient.
- Comfortable seating and heavy-duty central locking/steering casters provide a transport system that is safer for the patient and caregiver.
- The I-1000 chair seat width is 31" wide, and accommodates patients up to 1000lbs. Tilt-in-Space and recline functions are fully electric.
- The I-700 chair seat width is 27" wide, and accommodates patients up to 700lbs. Tilt-in-Space and recline functions are mechanically assisted.
- The I-400 chair seat width is 21.5" wide, and accommodates patients up to 400lbs. Tilt-in-Space and recline functions are mechanically assisted.
- The I-Series chairs have welded, seamless cushions, designed for reducing infection control concerns.



### EASE OF ADJUSTMENT

The I-Series converts from an upright position to a reclined, stretcher position with an infinite number of positions in between. The small wheel base allows for turning accuracy and smooth comfortable motion.

## CONVERTIBLE® I-SERIES FEATURES

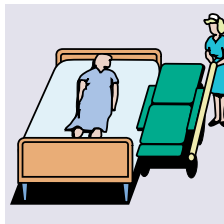


- A** All chairs quickly and easily adjust to Tilt-in-Space positions
- B** Fully-adjustable headrest with side support
- C** Heavy-duty central locking/steering casters are safer for patient and caregiver
- D** The Barton® PTS™ helps transfer any patient with easy, and adjusts to fit most hospital beds and stretchers
- E** Chairs are height-adjustable

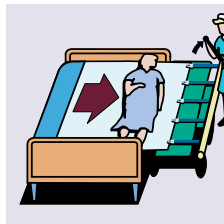


I-700

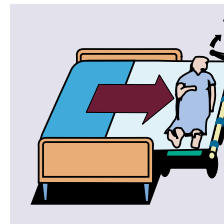
## BARTON POSITIONING AND TRANSFER SYSTEM (PTS™)



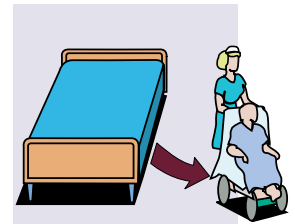
**1** Place chair at bed side in horizontal position.



**2** Attach sheet to the Barton® PTS™.



**3** Transfer patient by turning handle.



**4** Incline chair and you're ready to go!

*"Technology that puts people first."*



**1- 877- BARTON**

*"Your Safest Move."™*

**BARTON**  
MEDICAL CORPORATION